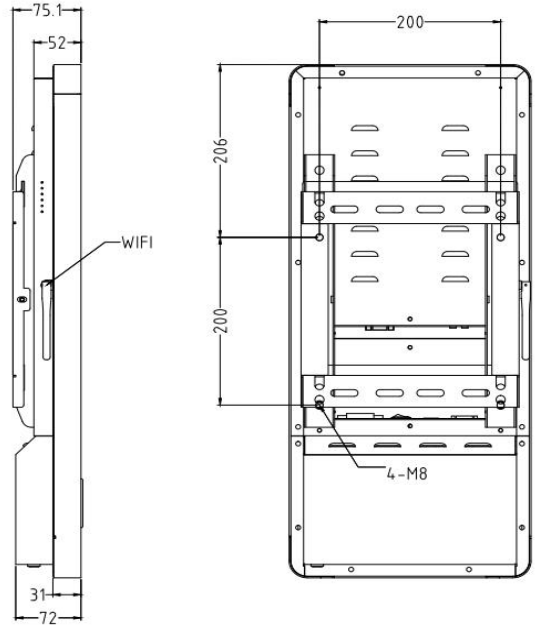
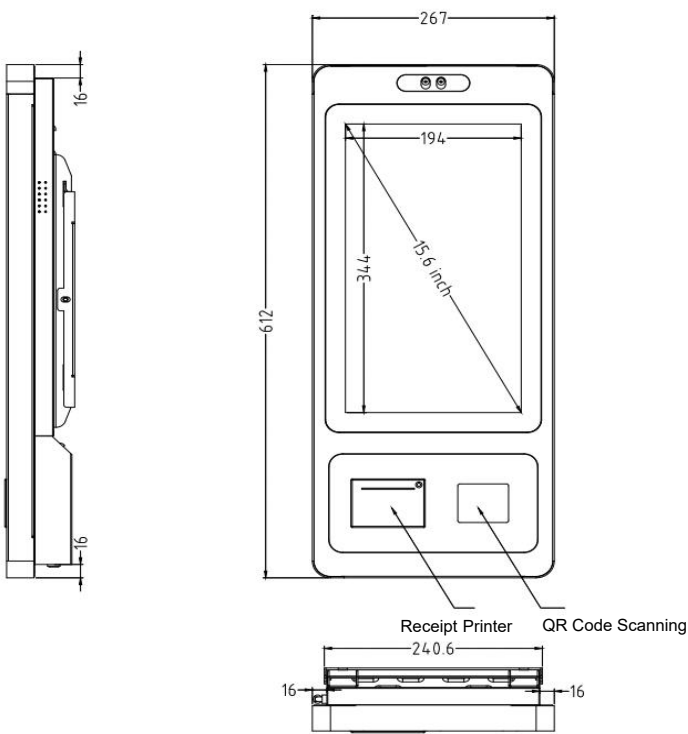
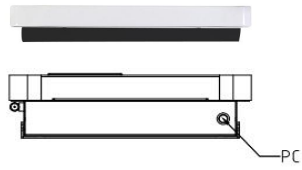


# 15.6" Wall Mounting Touch Kiosk(ARM)



**24/7 Commercial Use**

Industrial-grade Power Supply  
30,000-hour extended life LCD display

**Android / Windows Optional**

Android 11 default, High-end spec optional  
Latest Celeron J6412 default  
i5 12Gen Optional

**Free customization**

Multiple peripheral configurations available  
integrate your own POS terminal

**Easy wall mount or Floor Mount**

Wall mount bracket by default  
Optional with pre-drilled holes for floor mounting

**Android System**

CPU	Rockchip RK3568	Rockchip RK3399	Rockchip RK3588
Graphic GPU	ARM G52 2EE	Mali-T864	Mali-G610
Memory	2G (4G optional)	4G	4G (8G optional)
Storage	32G eMMC	64G eMMC	64G/128G eMMC
Network	10/100M RJ45, 802.11 a/b/g/n/ac Wifi	100/1000M RJ45, 802.11 a/b/g/n/ac Wifi	100/1000M RJ45, 802.11 a/b/g/n/ac Wifi
Pre-installed OS	Android 11	Android 9	Android 12

**LCD Panel**

Screen diagonal	15.6inch
Display active screen size (mm)	344 *194 mm
Aspect ratio	16:9
Physical resolution	1920*1080
Colours displayed	16.7M
Brightness (cd/m2)	≥250
Contrast	1000:1
Visual Angle H/V (°)	178/178
Backlight Lifetime (hours)	LED 30,000
Refresh Rate	60 Hz

**Touch Panel**

Touch technology	PCAP
Response time	<5ms
Touch points	10 points standard
Touch effective recognition	>1.5mm
Scanning Frequency	200Hz
Scanning accuracy	4096×4096
Working Current/Voltage	180Ma/DC+5V±5%
Surface Hardness	Mohs class 7 explosion-proof glass

**Operation Environment**

Operation Temperature	0℃-50℃
Operation Humidity	10% - 80%
Storage Temperature	-5℃-60℃
Storage Humidity	10% - 85%

**Dimension**

Machine(mm)	267 (W) ×612 (H) × 72 (T)
Package(mm)	415 (W) ×765 (H) × 205(T)
Net weight	8kg
Gross weight	14kg

**Power supply parameters**

Power Input	110-240V AC 50/60Hz
Power Output	DC 12V4A
Standby power consumption	≤0.5W
Overall power consumption	Android <36W, X86<48W

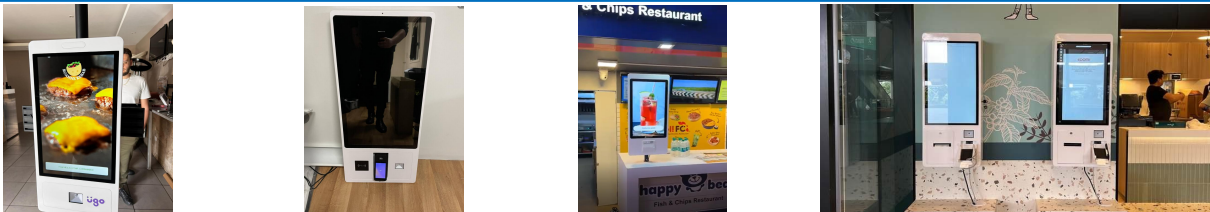
**External Connectors**

RJ45 Ports	x1
Power Socket	x1
USB 2.0	x2

**Included in the Delivery**

Manual	x1
WIFI antenna	x1
Wall mount bracket	x1
AC Power cable	x1

**Use Case**



## Peripherals

The GD156C Kiosk comes equipped with a high-speed thermal printer, a QR code scanner, and an RFID card reader. Its versatile design allows for compatibility with a wide range of peripherals, and the option to customize with or without specific devices. With a short customization period ranging from 7 to 35 days, delivery can be completed efficiently.



### Thermal Printer

Model	MS-E801
Printing Speed	250MM/S(MAX)
Printing Width	72MM
Paper Width	80MM(MAX)
Resolution	576dots/line
Paper Roll	Dia 80MM(MAX)
Paper Cut	Auto Cut



### Barcode Scanner

Model	EMT8020
Resolution	640*480 COMS
Recognition Accuracy	5mil
Field of View	Horizontal 68°, Vertical 51°
2D Codes	PDF417, QR Code, DataMatrix, etc
1D Codes	Code 128, EAN-13, EAN-8, Code 39, etc



### RFID card reader

Model	M11
Frequency:	IC Mifare1/; CPU/TypeA; 14443A
Protocols:	IC/ID
Supported Cards	80MM(MAX)
Functions:	Read/Write IC cards, Read ID cards

## More Options for customization



Fingerprint Sensor



Metal Keyboard



Card Dispenser



Payment terminal



Camera



NFC-Payment



4G LTE



Battery-UPS